



SOLTECH GROUP

Company
Introduction

01 Company Overview	CEO's Message	04
	Company Summary	05
	Company Overview	06
	Vision & Core Values	07
<hr/>		
02 Business Overview	Network Solutions	09
	SONOS	10
	Ethernet Board Solution	11
	SOLMate	12
	FIBERMART	13
<hr/>		
03 SOLTECH Technical	In-house Manufacturing Capabilities	15
	OEM / ODM	16
	Customer References	17

01 Company Overview

CEO's Message 04

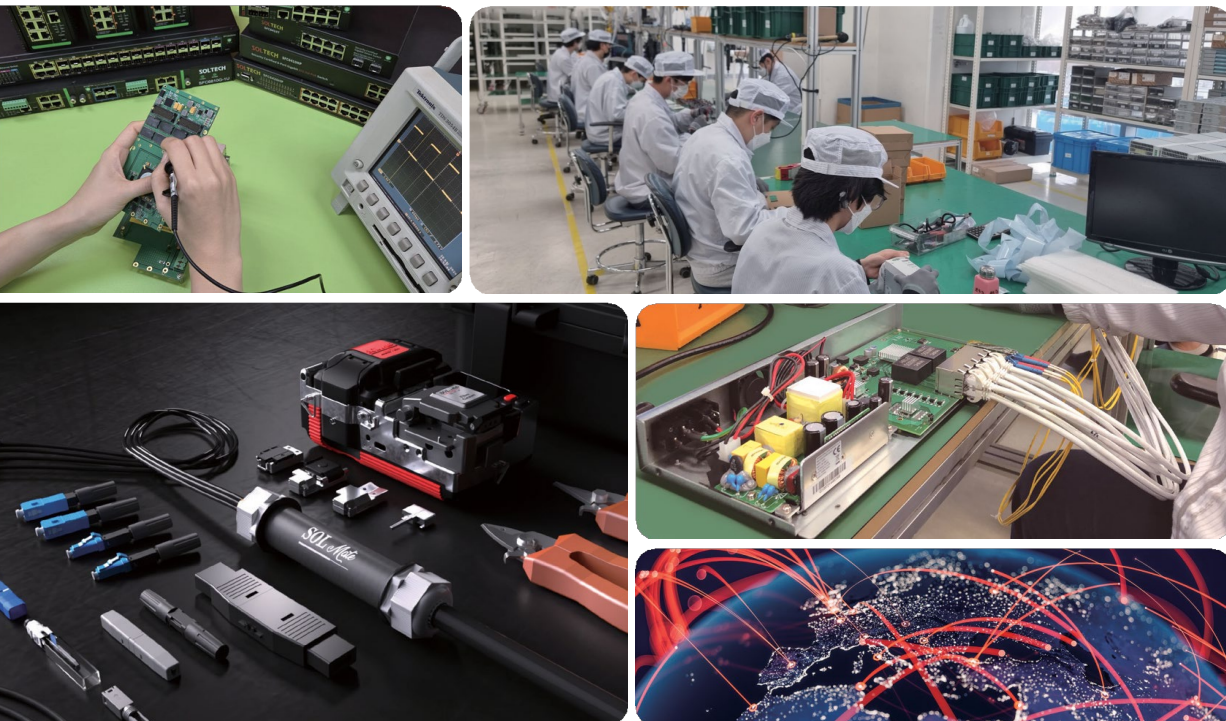
Company Summary 05

Company Overview 06

Vision & Core Values 07

CEO's Message

SOLTECH has grown into a leading **optical communications** and **network solutions** company in Korea, based on advanced **optical and Ethernet network technologies**.



Since its establishment in 1996, SOLTECH has continuously developed Ethernet products and industrial network solutions, contributing to the growth of Korea's telecommunications infrastructure.

Centered on our proprietary network operating system, SONOS, SOLTECH provides integrated hardware and software solutions. Through our FTTx solution, SOLMate, we support customers across the entire optical and communications infrastructure lifecycle as a total solution partner.

SOLTECH continues to expand its business across various industries, including defense, transportation, railways, power, maritime, smart factories, and energy, while strengthening its global presence in Asia, the Middle East, Europe, the United States, and Japan.

Moving forward, SOLTECH will remain a trusted partner, delivering optimized solutions through reliable quality and advanced technology.

Thank you.

Company Summary

Korea's No.1 Optical Communication Solutions Provider

First in Korea

Optical modem, converter,
industrial switch launch

No.1 in KOREA

Optical Communication Solutions

30 years of expertise

30 Years

Product Lineup

Products for optical network
infrastructure

250 Products

Production Capacity

Optimized manufacturing facilities

200,000 Units

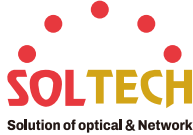





SOLTECH

Company Overview

Optical Communication Solutions Company Built on Time and Experience

Based on long-term technical expertise and field experience, we provide optical and network solutions optimized for industrial environments.

Company Name	SOLTECH	Core Businesses	Network Solution	Security network solutions, industrial PoE Ethernet, Ethernet optical network solutions, certified industrial 10G switches, industrial PoE switches, L2/L3 Ethernet switches, optical communication materials			
Established	May 1, 1996		Optical Solution	MDU & ATB solutions, FTTH fusion solutions, FDF direct optical connector solutions, high-density fiber management solutions, field fusion connectors & tools			
Head Office	11, Dangsang-ro 41-gil, Yeongdeungpo-gu, Seoul, W-dong 1702 (Dangsang SK V1 Center)		Ethernet Board Solution	Customized Ethernet boards for industrial, defense, mobility, and smart factory, embedded network modules (OEM/ODM), customized integrated development support			
R&D Center	11, Dangsang-ro 41-gil, Yeongdeungpo-gu, Seoul, E-dong 210 (Dangsang SK V1 Center)	Platforms	Network Solution	Optical Solution	Global Sales	Online Market	
Bucheon Factory	122, Jomaru-ro 385beon-gil, Bucheon-si, Gyeonggi-do, #906 (Sambotech Tower)		www.soltech.co.kr	www.solmate.kr	www.solmate.net	www.fibermart.co.kr	
Incheon Factory	11, Seounsandan-ro 5-gil, Gyeyang-gu, Incheon	Group Companies					
			SOLTECH	SOLTECH INFONET	SOLTECH NETWORKS	SOLTECH PRECISION	

Vision & Core Values

SOLTECH VISION

Your on-site total solution partner.

SOLTECH CORE VALUES

Working with customers through quality and collaboration.

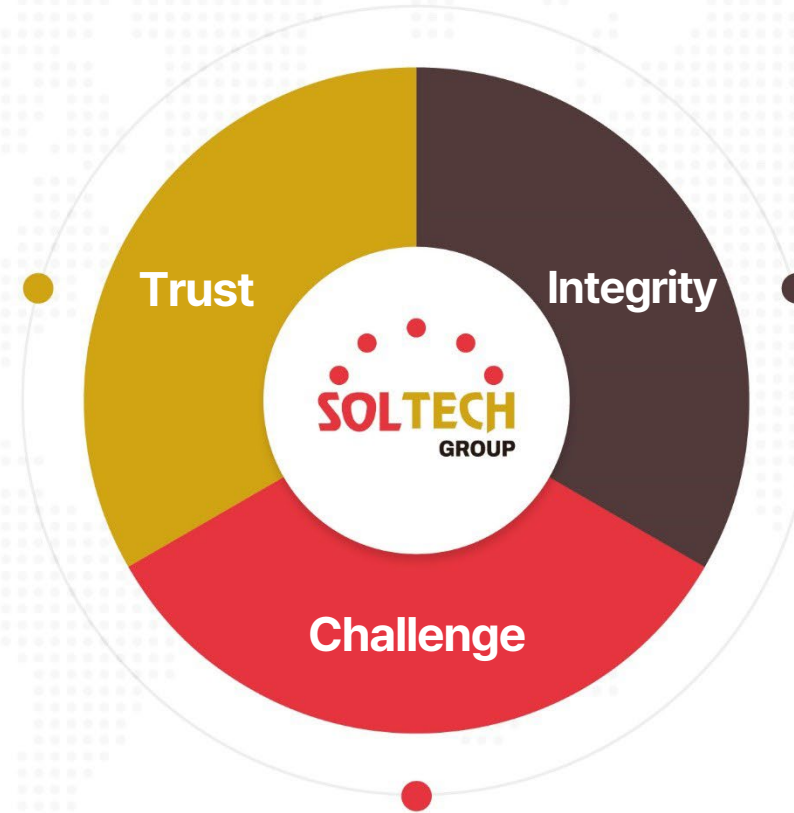
Trust

Integrity

Communicate clearly and execute accurately.

Challenge

Think open-minded and take bold challenges.



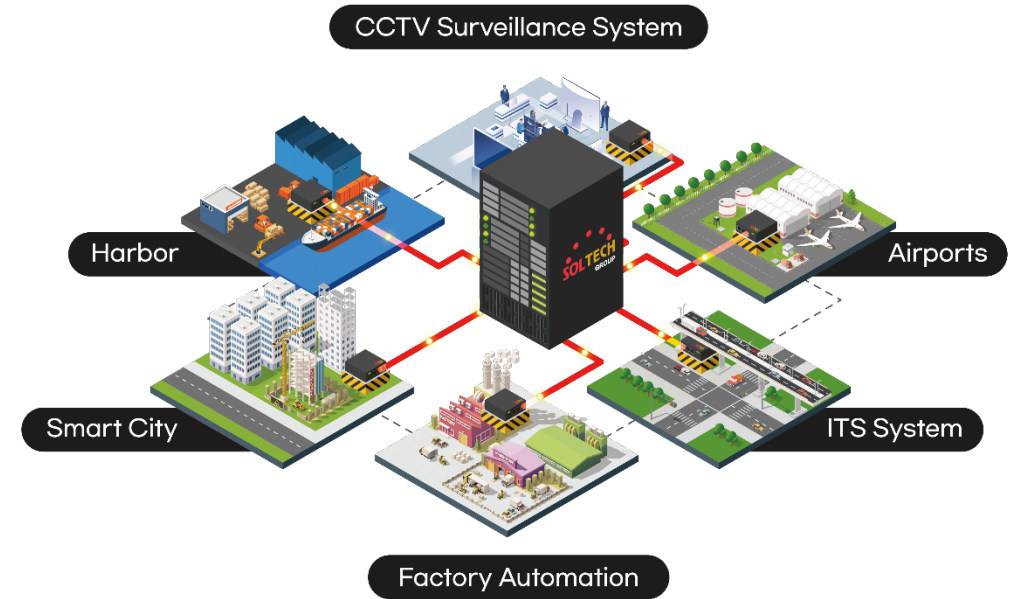
02 Business Areas

Network Solution	09
SONOS	10
Ethernet Board Solution	11
SOLMate	12
FIBERMART	13

Network Solution

Delivering innovative optical communication solutions that connect industries based on proven network infrastructure.

From planning and design to deployment, operation, and maintenance, we provide integrated optical and Ethernet solutions optimized for diverse industrial environments.



Application Areas

Industrial Ethernet Solution

Smart city, smart factory, shipbuilding & marine, railway, road infrastructure



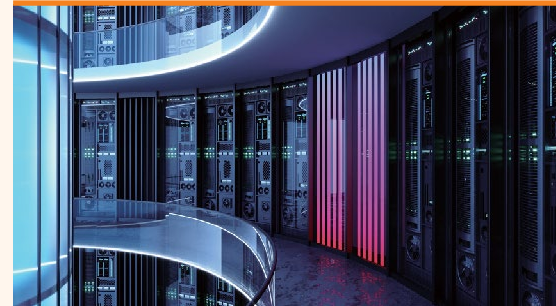
PoE Ethernet Solution

Security control, CCTV, hospitals, defense & public facilities



Ethernet Optical Transmission Solution

Enterprises, campuses, hospitals, national infrastructure, data centers



SDN Solution

Regions, educational institutions, large-scale industrial and public networks



SOLTECH ONE NETWORK OPERATING SYSTEM

SONOS

Integrated stability, usability, and security

Korean-made
equipmentHigh data
reliabilityUser-centered
UXSecure OS
Enhanced
securityAdvanced
functionality

SONOS NOS Key Advantages

Core Strengths

Korean-made switches	Full localization of H/W and S/W (source-based)
Fast device boot time	Boot time: under 20 seconds
Excellent device stability	Unified ONE image (ONE-img) for multi-device management and verification
Stable Dual-Bank NOS	Stable NOS operation in case of unexpected on-site issues
Secure configuration management (Dual-Bank Config)	Secure configuration storage and loss prevention (save, download, upload, select, delete supported)

Management Convenience

Unified device UX	Unified management via Web, CLI, and SNMP
User-friendly web design & functions	Web UI for login, device status, and settings
Device-type-based web themes	Web themes by device type and security options
ScanManager: PC-based switch management tool	L2-based SOLTECH device management tool
Unified NOS management & upgrade support	Unified management using common ONE image
Find My Switch on-site LED support	Device status and location check via LED

Device Security

Enhanced device security support	High-security RTOS kernel to block malware execution
Security compliance & vulnerability support	Certified by national security standards, KISA vulnerability guidelines applied
Root account ID change support	Root ID change via Web/CLI
Network-wide deployment with certified security devices	Network-wide configuration and centralized management

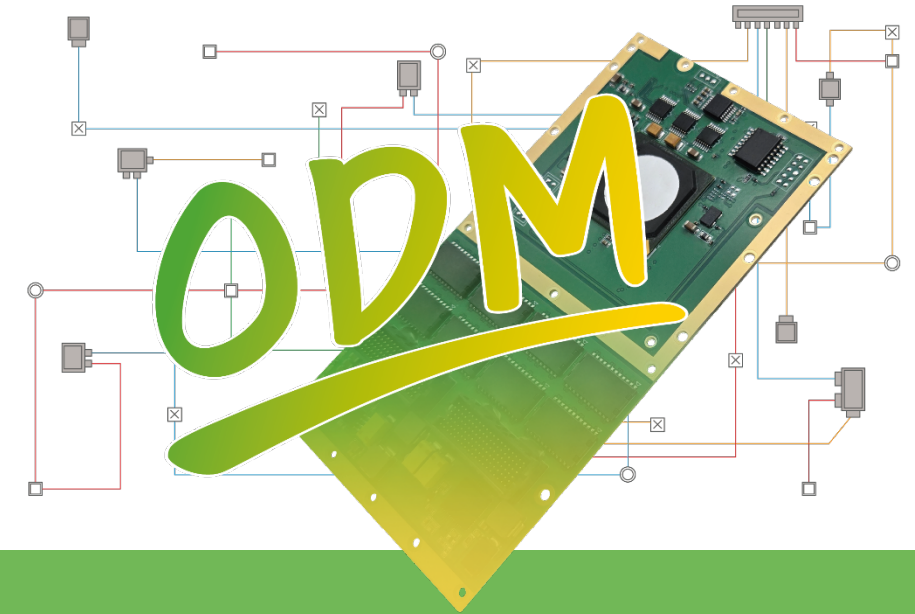
Advanced Functions

SFP Full-Auto function support	Automatic SFP port setup (default)
Optical link status monitoring	Rx Power monitoring using SFP DDM (Web, CLI, SNMP supported)
PoE convenience function support	PD Alive, PD Reset, PSE Detect, PD Power OFF Scheduler
High PoE device compatibility	Verified PoE compatibility using tester
Fast ring protocol protection & recovery	S-Ring and ERPS (G.8032) support (recovery under 30 ms)
Quick ERPS support	Simple and fast ERPS setup
Fast ODM (S/W) device support	Customized and verified NOS delivery

Ethernet Board Solution

Custom Ethernet Communication Boards Connecting the Core of Industry

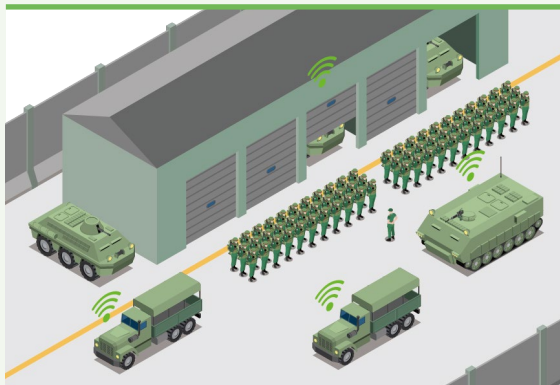
SOLTECH INFONET provides high-reliability industrial network boards optimized for embedded system environments. From electronic circuit and mechanical design to firmware development, we support integrated OEM/ODM solutions tailored to customer systems.



Application Areas

Defense Systems

Stable communication performance even in harsh environments



Unmanned Systems(UAV / USV)

Optimized real-time data processing for unmanned platforms



Connected Cars

Communication solutions optimized for in-vehicle network environments



Smart Factory

Stable network infrastructure for industrial automation



Optical Connector Fusion Solution *SOL Mate*

Ready to Use, Anywhere with SOLMate

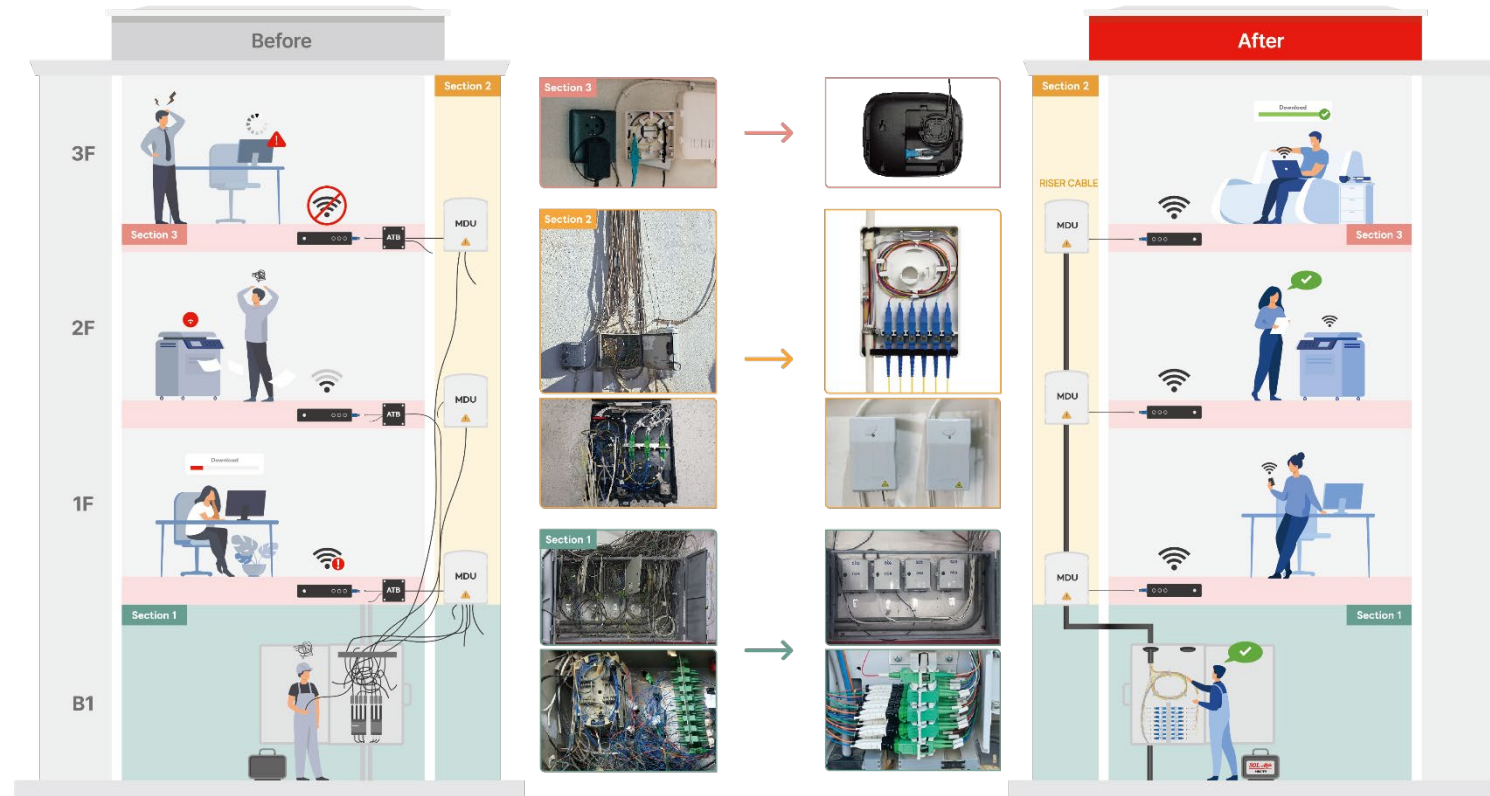
Anyone, Anywhere, Anytime

Easy, fast, and reliable installation!

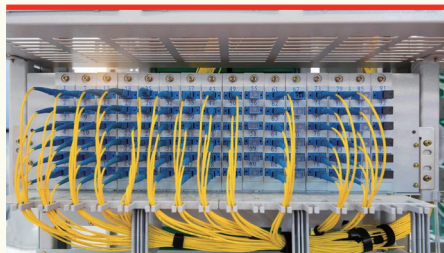
Section 1 FDF Management

Section 2 MDU(RISER CABLE)

Section 3 Access → ATB Box(No need) + dB loss Improvement



MDU & ATB Solution



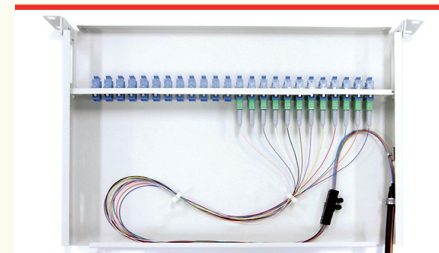
FTTH Drop Cable Optical Connector Fusion Solution



Drop Cable Mid-span Connection Solution



FDF Direct Optical Connector Connection Solution



Compact Alternative to Optical Termination Box Solution

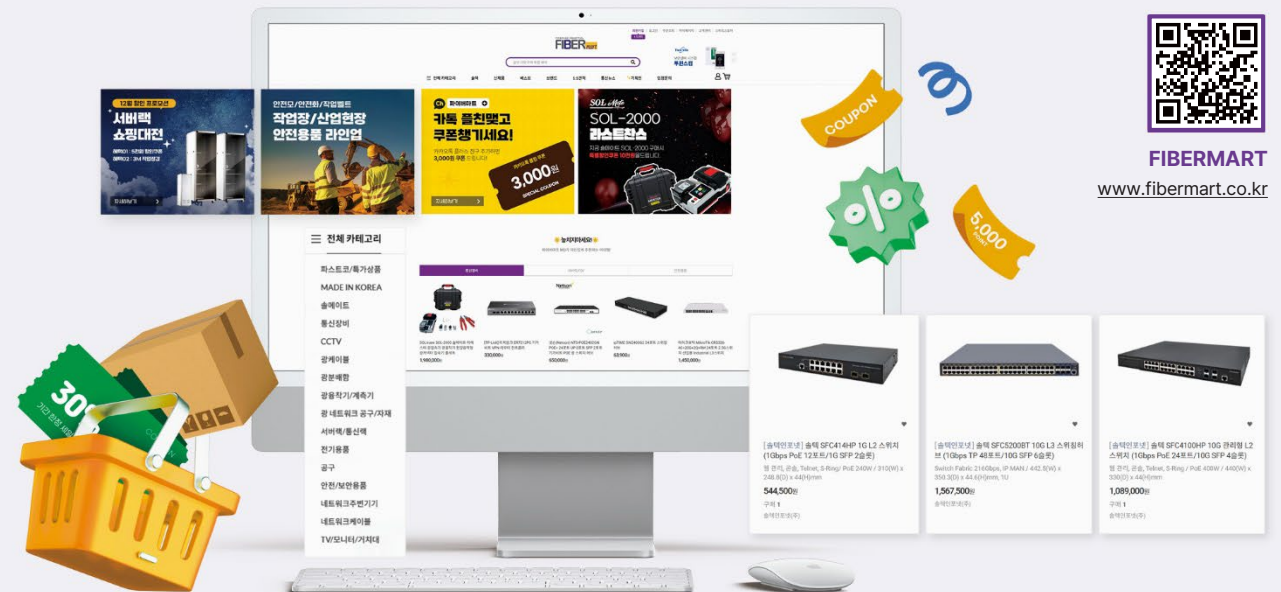


On-site Customized Communication Infrastructure B2B Platform

MANAGED INDUSTRIAL
FIBERmart

Fast supply improves on-site project completion.

A platform that understands communication sites, FIBERMART Key Strengths



Trust



B2B partner network trusted on-site

3,000+ member companies

Verified partner network selected by professionals working in real communication sites.

Variety



Complete lineup across optical & network categories

10,000+ professional solutions

From basic materials to high-end equipment, all products for communication infrastructure in one place.

Speed



Optimized delivery to meet construction schedules

Same-day shipping policy

(Based on SOLTECH and FM Series in-house products)

Systematic inventory and logistics minimize waiting time and ensure stable supply.

Expertise



Engineer-focused technical matching and support

Dedicated expert feedback

(Based on SOLTECH and FM Series in-house products)

Beyond simple sales, we provide product design and technical consulting optimized for on-site environments.

03 SOLTECH Technology

In-house Manufacturing Capability	15
OEM / ODM	16
Customer References	17

Production Capability

Supply site customized communication infrastructure

With a production capacity of 200,000 units and a product lineup of over 250 items, we can provide a stable, large-volume supply.

Ethernet Board

Layer2 Switch

SDN Switch

Chassis Switch

Industrial Switch

Unmanaged Switch

Media Converter

Field Fusion Splicing Tool

Field Fusion Splicing Connector



OEM / ODM

Providing integrated, customized solutions from planning through implementation and maintenance.

SOLTECH, expertise in OEM and ODM business, provides integrated services for product development, production, and quality control. Based on 30 years of experience supplying to national and corporate communication infrastructures, we do our utmost to swiftly deliver the solutions our customers require.

Service process

01

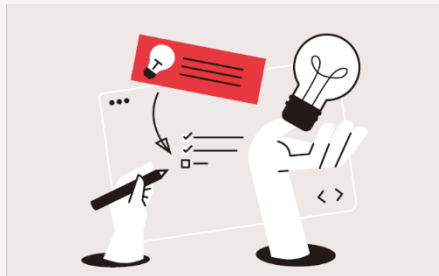
Planning & Evaluation



After receiving the customer's requirements, we design the product and prepare a proposal.

02

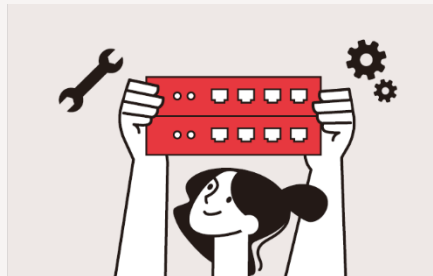
Research & Development



Develop new H/W and S/W products and verify performance and reliability.

03

Mass Production



Manufacture products through precise processes and reliable quality control.

04

Product Delivery



Storage and delivery management to ensure safe and stable supply.

05

After-sales Service



Provide online and offline technical services for repair and replacement.

Customer references

SOLTECH is an optical communication solution provider that supplies optical network equipment to various sectors, including airports, ports, subways, highways, tunnels, smart factories, smart cities, power plants, and communication and security facilities.



한국전력공사
KORER ELECTRIC POWER CORPORATION



Chungcheongbuk-do
Office of Education



서울특별시



인천교통공사



K water



대한민국 국방부
Ministry of National Defense

Customer references

SMART CITY·U-CITY·ITS Infrastructure References

Extensive experience in building public infrastructure in the SMART CITY, U-CITY, and ITS sectors

With proven technology and stable network solutions, we have carried out projects for local governments.

- | Ulsan Metropolitan City C-ITS next-generation intelligent transportation system
- | Pohang City traffic and U-City communication network
- | Anyang City ITS integrated control infrastructure
- | Gangneung City ITS phases 1, 2, and 4
- | Jinju City intelligent CCTV-based smart city
- | Pyeongtaek smart city roadside traffic communication infrastructure
- | Busan Metropolitan City Suyeong-gu smart streetlight public Wi-Fi
- | Gyeongbuk Gyeongju City subway communication and optical network upgrade
- | Ulsan Metropolitan City Ulju-gun nationally important wetland smart flood alert system
- | Changwon City traffic AI-based integrated control infrastructure



Customer references

Urban Security · Control · CCTV Infrastructure References

Track record in building CCTV infrastructure for crime prevention, parking enforcement, child protection, and unmanned monitoring, and possess validated infrastructure deployment records optimized for various urban environments.

- | Seoul Gangnam, Dobong, Dongdaemun, and 12 other districts crime prevention, parking enforcement, and multi-purpose CCTV project
- | Yongin City residential vulnerable area crime-prevention CCTV project
- | Gwangju City Buk-gu children protection zone illegal parking CCTV project
- | Pyeongtaek City crime-prevention CCTV expansion project
- | Naju City crime-prevention CCTV upgrade project
- | Gongju City crime-prevention CCTV replacement and expansion project
- | Boseong-gun village crime-prevention CCTV installation project
- | Asan City illegal parking unmanned enforcement system construction
- | Busan Metropolitan City crime-prevention and parking enforcement CCTV phase 1 and 2 projects
- | Gyeongnam Sacheon, Yangsan and 4 other cities CCTV replacement projects



Customer references

Defense · Military · Security Infrastructure References

Projects to build boundary systems and CCTV–communication infrastructure for the Army, Navy, Air Force, and public defense and security agencies, and provide advanced, high-reliability defense and security solutions based on robust networks.

- | Army scientific boundary system construction and replacement
- | Army Intelligence Command external surveillance and educational facility CCTV system
- | Supply of network equipment for the construction of Seobuk Garrison facilities and related infrastructure
- | Air Force 10th Fighter Wing boundary CCTV and network upgrade
- | Maritime scientific boundary system for maritime security
- | Corps-level command power control communication network
- | Naval Operations Command – coastal boundary CCTV system
- | Military base protection area-wide CCTV system
- | Establishment of communication lines related to military base protection
- | CCTV monitoring room for ammunition depot



Customer references

Railway · Subway · Urban Rail References

Based on SOLTECH's experience in building railway and urban rail infrastructure, we provide high-capacity, high-reliability transportation environments encompassing station CCTV, access control and security, and operation center networks.

- | Incheon Transit Corporation new station video surveillance equipment
- | Metro Line 9 CCTV system
- | Line 4 Jinjeop Line network infrastructure
- | Pohang KTX station control and security infrastructure
- | Incheon urban rail control room telephony and recording system
- | Railway station legacy CCTV digital migration project
- | Subway station integrated wired and wireless network
- | Metropolitan rail station access control and security CCTV
- | Urban rail operation center (control room) network upgrade
- | Railway infrastructure in Jochiwon, Busan, and Ulsan regions



Customer references

Industrial · Plant · Logistics References

Built stable industrial infrastructure in mission-critical environments such as power plants, steel mills, production lines, and logistics centers, based on our experience in monitoring, control, and communication networks.

Industrial · Plant

- | KEPCO nationwide substation digital SCADA system
- | POSCO GasLeak monitoring system network
- | POSCO shared hazardous chemical facility system
- | Ecopro BM CCTV and production process network
- | POSCO (Gwangyang) digital CCTV migration project
- | POSCO (Pohang) raw material yard monitoring system
- | POSCO coated steel product production line network
- | Ecopro BM Pohang new plant communication network

Power · Logistics

- | Korea Hydro & Nuclear Power eco-friendly power plant security video monitoring system in Daegu
- | Dangjin Power Headquarters explosion-hazard area CCTV and communication equipment
- | Daegu Environmental Resource Facility CCTV system
- | BYC Wanju smart logistics center
- | Logis1 Yangji logistics center network



Customer references

Education · Medical · Campus Network References

With a proven track record in CCTV, access control, and wired/wireless network infrastructure, we have built safe and stable network environments for education and healthcare.

University · Campus

- | Soongsil University campus network upgrade
- | Daegu National University of Education access control system
- | Korea University Sejong Campus new building CCTV network
- | Kookmin University main campus CCTV network construction
- | Catholic University of Bucheon Campus CCTV network

Hospitals

- | Gangbuk Samsung Hospital CCTV security network
- | Samsung Medical Center CCTV and access control network
- | Busan Adventist Hospital operating room upgrade and emergency room network
- | Soonchunhyang University Cheonan Hospital access control and security network
- | Yonsei University Wonju Severance Christian Hospital

Schools · Educational Facilities

- | Wonju Central Elementary School CCTV
- | Busan Metropolitan Office of Education school access control
- | Numerous other projects improving CCTV and network infrastructure at elementary, middle, and high schools



Customer references

Enterprise · Data Center · Construction · Building References

Our experience in building enterprise campus and data center infrastructure, we have established high-availability, highly scalable network environments ranging from IDCs and offices to landmark facilities and large residential complexes.

Enterprise · Data Center · Landmark

- | Samsung Electronics Cheonan Campus emergency broadcasting system
- | Yeouido Parc One development project construction CCTV
- | Yeouido Hyundai Department Store, Pangyo iSquare, Namyangju Hyundai Premium Outlet
- | Gangnam Centerfield / Gyeonggi GW Networks IDC
/ Gasan IDC Center LG U+ data centers and offices
- | Yesol's Jeongdap project for replacement of aging electrical and network facilities

Construction / Residential · Buildings · Complexes

- | Hyundai Engineering & Construction Seongnam, Nobeuk, Bongdam, and Gyeongsan residential complex network infrastructure
- | Hyundai Motor Company Gyeryong, SK Daejeon Shinhoeng 3rd, Hyundai Busan Yeonsan, and others
- | Hyundai Engineering projects in Buk Wirye, Hanam Misa, and Pyeongtaek Godeok complex networks
GS Sindorim, Suncheon Wangji District 2 urban development projects
- | Gwangmyeong Design Cluster knowledge industry center CCTV system



Customer references

Public Infrastructure References

We have carried out projects for water supply communication networks, disaster and flood monitoring systems, and public Wi-Fi deployments, providing optimized network solutions for various public infrastructure environments.

- | Chuncheon City water supply business communication infrastructure
- | Naegok Tunnel entrance and exit panel monitoring communication network
- | Ulsan Metropolitan City Jung-gu Taehwagang National Garden smart flood risk alert system
- | Chungcheongbuk-do Okcheon-gun Cheonghar (reservoir and drainage) network facilities
- | Busan Metropolitan City water supply business head office purification project external monitoring system
- | Jeollanam-do Naju City school power panel improvement construction
- | Gyeongbuk Gyeongju City self-driving vehicle optical switches and communication network
- | Busan Suyeong-gu smart streetlight public Wi-Fi
- | Nationwide public Wi-Fi project, public Wi-Fi installation in Jongno-gu Suyeong-dong
- | Korea Environment Institute nature-friendly special public infrastructure



Customer references

FTTH Solution References

Through KT and SK FTTH pilot and operation projects, we have successfully deployed proven FTTH solutions for branches across the Seoul metropolitan area, central, Yeongnam, Honam, and Jeju regions.

KT Services RN Simple Maintenance Project (Direct Solution Applied)

- | Metropolitan Area : Gangnam, Bangbae, Seocho, Nowon, Uijeongbu, Suwon branches
- | Yeongnam Region : Daegu, Gumi, Gimhae, Jinhae branches
- | Central Region : Daejeon, Cheongju, Sejong branches
- | Honam Region : Gwangju, Jeonju branches

Home & Service SK Broadband FTTH Solution Pilot Project

- | Metropolitan Area : Eunpyeong, Nowon, Seongbuk, Uijeongbu, Bucheon, Namyangju, Seoincheon, Dongincheon branches
- | Central Region : Sejong, Chungbuk, Seobuk Gwangju branches
- | Gangwon Region : Chuncheon branch
- | Honam Region : Jeonju, Gunsan, Gwangju, Iksan branches
- | Jeju Region : Jeju branch

KT Services FTTH Solution Pilot Project

- | Metropolitan Area : Seodaemun, Dongdaemun, Pyeongtaek, Osan, Yeosu, Ganghwa branches

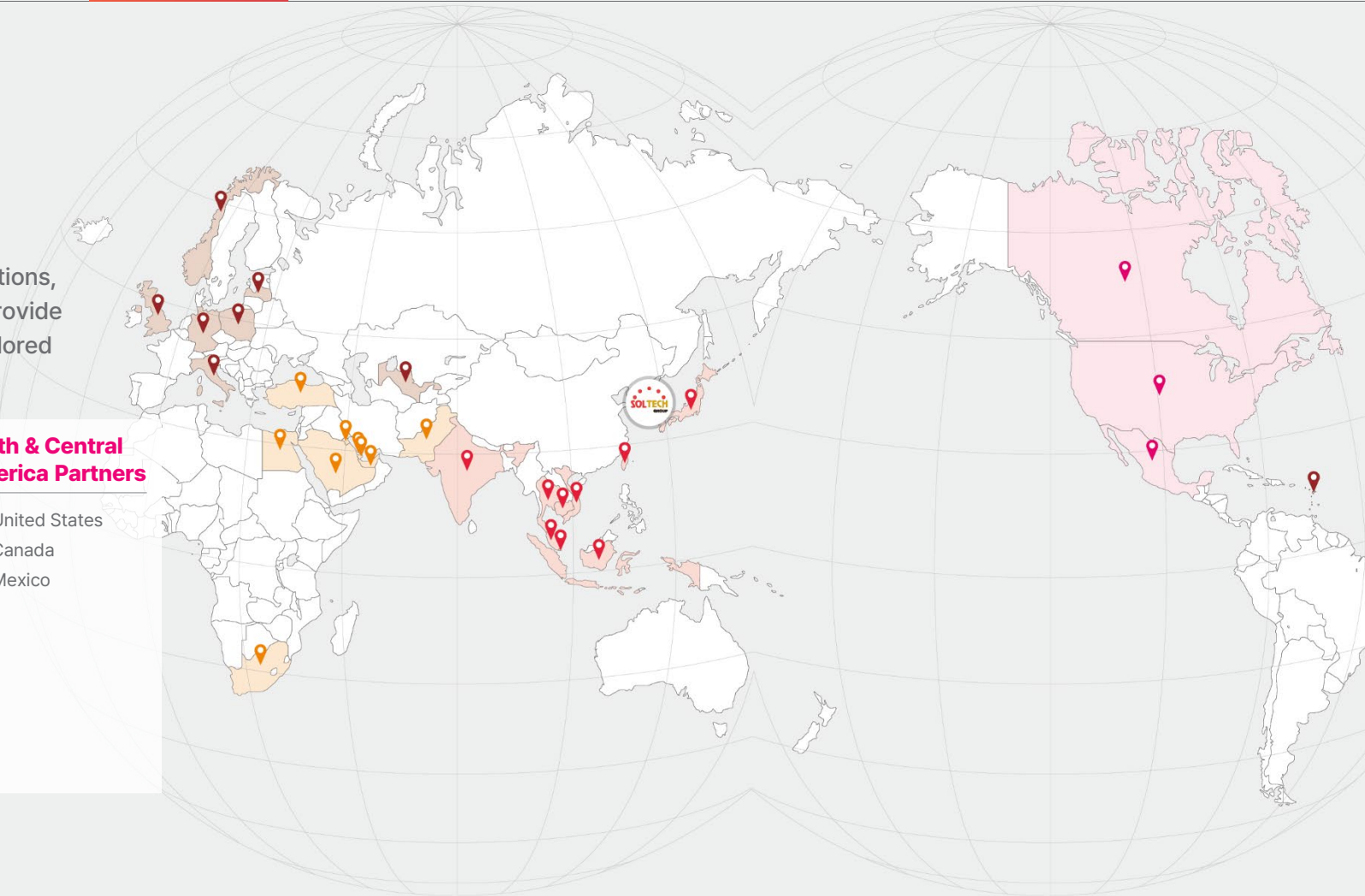


Customer references

Global References

With a global network of partners in 29 countries and 55 organizations, we have extensive experience executing overseas projects and provide optimized communication and security infrastructure solutions tailored to each country's environment.

<p>Asia Partners</p> <ul style="list-style-type: none">  Vietnam  Malaysia  Japan  Singapore  Thailand  India  Taiwan  Indonesia  Cambodia 	<p>MENA Partners</p> <ul style="list-style-type: none">  Saudi Arabia  UAE  Kuwait  Bahrain  Qatar  Pakistan  Turkey  Egypt  South Africa 	<p>Europe & Americas Partners</p> <ul style="list-style-type: none">  Uzbekistan  Poland  United Kingdom  Germany  Norway  Italy  Latvia  Guadeloupe 	<p>North & Central America Partners</p> <ul style="list-style-type: none">  United States  Canada  Mexico
---------------------------------------------------------------------------------------------------------------------------------------------------------------------------------------------------------------------------------------------------------------------------------------------------------------------------------------------------------------------------------------------------------------------------------------------------------------------------------------------------------------------------------------------------------------------------------------------------------------------------------------------------------------------------------------------------------------------------------------------------------------------------------------------------------------------------------------------------------------------------------------------------------------------------------------------------------------------------------------------------	--------------------------------------------------------------------------------------------------------------------------------------------------------------------------------------------------------------------------------------------------------------------------------------------------------------------------------------------------------------------------------------------------------------------------------------------------------------------------------------------------------------------------------------------------------------------------------------------------------------------------------------------------------------------------------------------------------------------------------------------------------------------------------------------------------------------------------------------------------------------------------------------------------------------------------------------------------------------------------------------------	-----------------------------------------------------------------------------------------------------------------------------------------------------------------------------------------------------------------------------------------------------------------------------------------------------------------------------------------------------------------------------------------------------------------------------------------------------------------------------------------------------------------------------------------------------------------------------------------------------------------------------------------------------------------------------------------------------------------------------------------------------------------------------------------------------------------------------------------------------------------------------------------------------------------------	----------------------------------------------------------------------------------------------------------------------------------------------------------------------------------------------------------------------------------------------------------------------------------------------------------------------------------------------------------------------------------------------------------



2025 Key Project References

- | VIETNAM : Supplied to projects for the Ministry of Security, Ministry of Transport, national hospitals, industrial complexes, local governments' CCTV and ACS systems, and Long Thanh International Airport.
- | KSA : Supplier of Saudi Telecom Company & Zamil Group
- | Uzbekistan : Supplied for the Tashkent International Airport project.

Countries	Partners
29	55

SOLTECH GROUP

Company
Introduction



SOLTECH
www.soltech.co.kr



GLOBAL
www.solmate.net

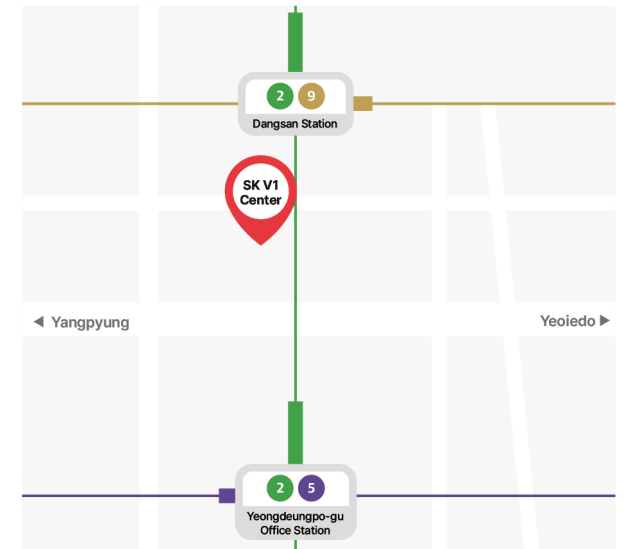


SOLMATE
www.solmate.kr



FIBERMART
www.fibermart.co.kr

Office Locations



#1702 W-Dong, SK V1 Center, Dongsan-ro 41st, Seoul, Korea

Tel. 02-701-8100 Fax. 02-701-6200 E-mail. soltech@soltech.co.kr