

SOLMATE SOLUTION

Best Solution for FTTH



www.solmate.net

|01 MEISTER |02 MDU & ATB SOLUTION |03 FTTX SOC(Splice On Connector) |04 Direct Fiber Connect |05 Cable Connect Closure



Guide

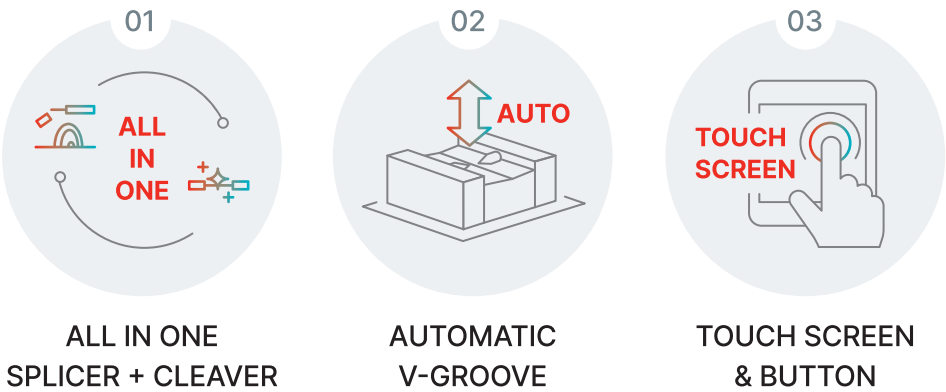
SOLmate

PRODUCT
INFORMATION



Innovative fiber optic connector solution.

Discover SOLMate revolutionary fiber optic connector solution. Our innovative approach enables easy installation for FTTH, making it accessible for everyone.



PACKAGE

- 1 MEISTER (Include Cleaver)
- 2 Holder driver
- 3 Cable holder
- 4 250um adaptor
- 5 SC holder
- 6 LC holder

- 7 Fiber Stripper & Scissors
- 8 Hard case



MEISTER
SPECIFICATION

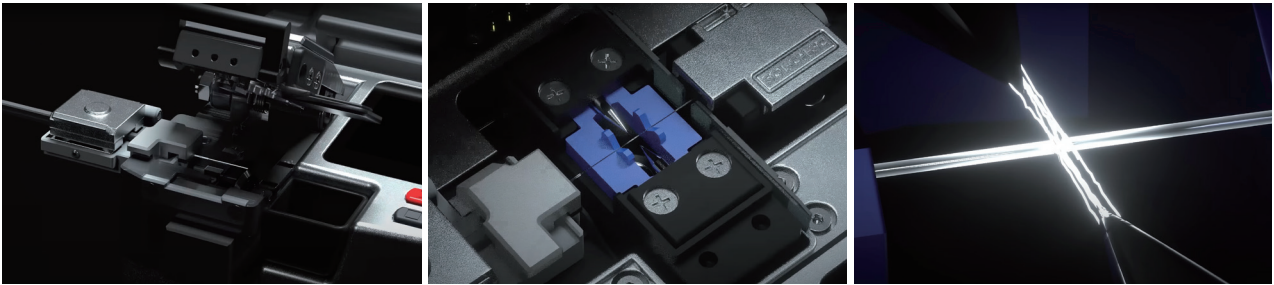


Item	Specification
Product Intro.	Single core Connector Maker (H/W Spec. Same)
Applicable Fibers	Single-Mode similar/dissimilar (G.652 & 657), Multi-Mode similar/dissimilar (G.651), Dissimilar Fiber (SM/MM)
Compatible fiber/cable	900um, 2mm, 3mm round, 2×3mm flat, 4mm
Typical Splice Loss	≤ 0.1 dB
Typical Splice Time	≤ 10 sec
Battery / Splice number	4850mAh / 100 times
Display	1.6Inch Full color touch screen LCD
Controller	Touch Control, 2 button (TACT)
Dimension	W80 x L139 x H66 mm
Weight	718g (Include Cleaver 125g)
User Convenience	One hand operating & Site User convenience
Product Configuration	2 in 1 (Include Cleaver)

CLEAVER
SPECIFICATION



Item	Specification
Operation Step	2 Step
Applicable Fiber	Glass Optical Fiber, Single Fiber
Clad Diameter	250μm, 900μm
Clad Length	10 ~ 20mm
Cleave Angle	Below 0.5°
Blade Life	16,000 Cleaving
Blade Adjustment	Manual
Dimention	W37 x L58 x H37 mm
Weight	125g



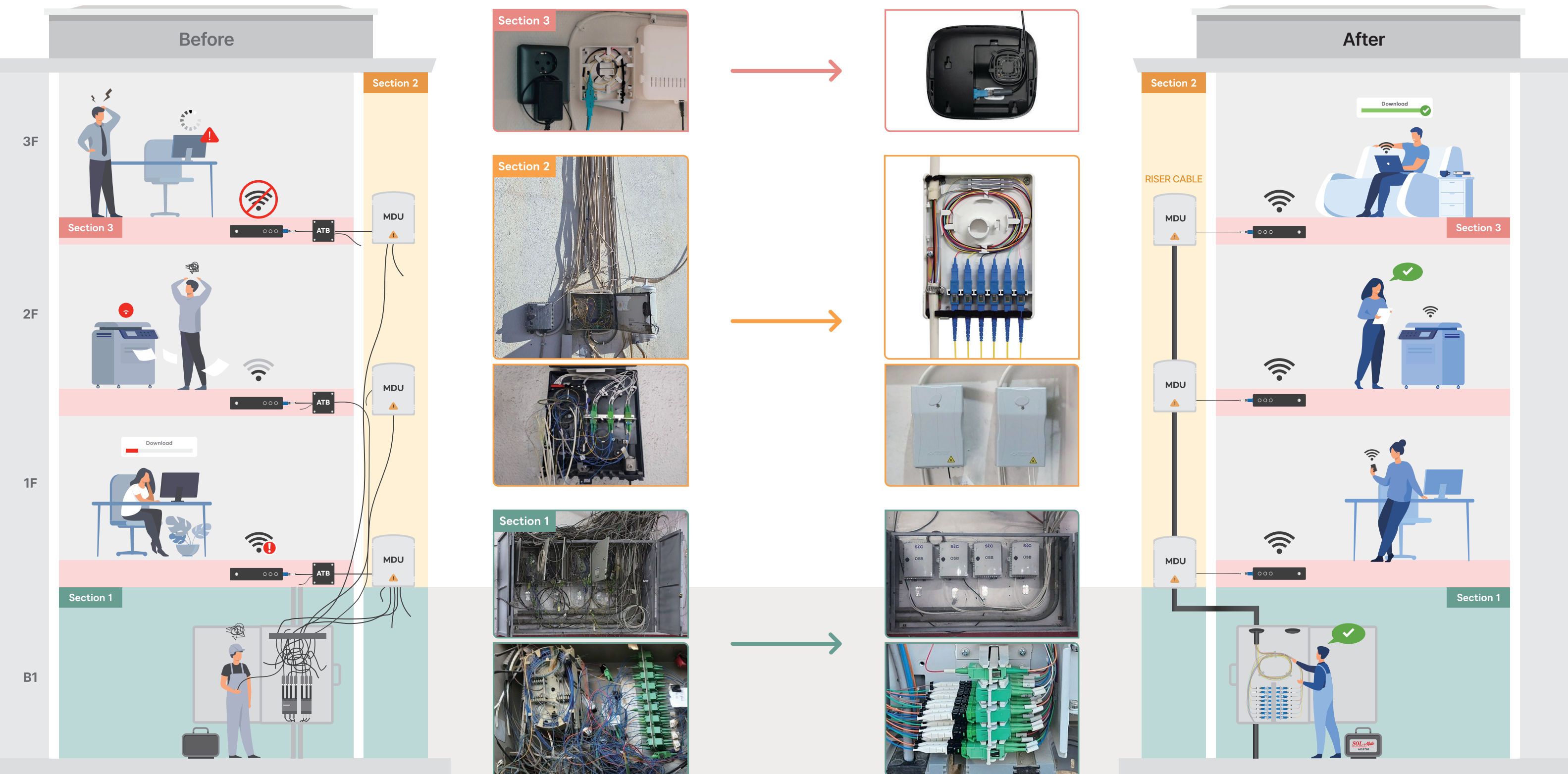
SOLUTION 01

SOL Mate* MDU & ATB SOLUTION*Find SOLMate's innovative fiber-optic connector solution.**

Discover SOLMate revolutionary fiber optic connector solution. Our innovative approach enables easy installation for FTTH, making it accessible for everyone. Upgrade your optical communication with SOLMate today.

Easy and Fast Installation

- Section 1** FDF Management
- Section 2** MDU(RISER CABLE)
- Section 3** Access → ATB Box(No need) + dB loss Improvement



SOLUTION 02

FTTX SOC(Splice On Connector)

SOLMate Connectors can be used in optical network work sites where G.652 & G.657 standard single-mode optical cables are installed. SOLmate dedicated connectors are available for SC and LC standard terminations.

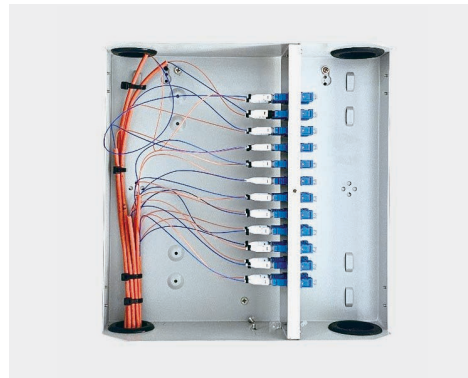
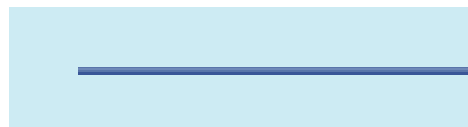
| Drop Cable 3mm Round |



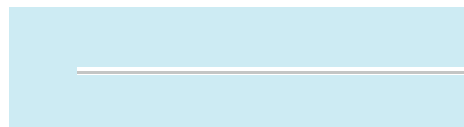
| Patch Cord 2mm Round |



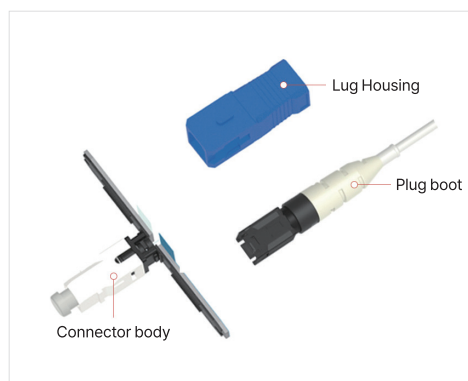
| Patch Cord 900um Round |



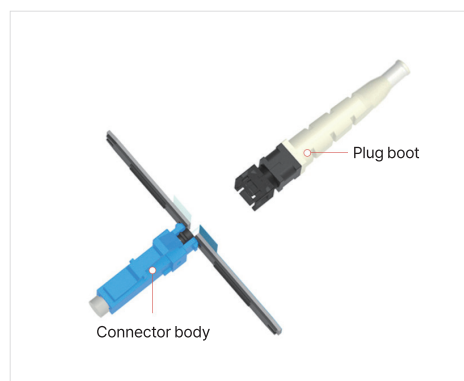
| 0.25mm Bare Fiber |



| SC assembly |



| LC assembly |

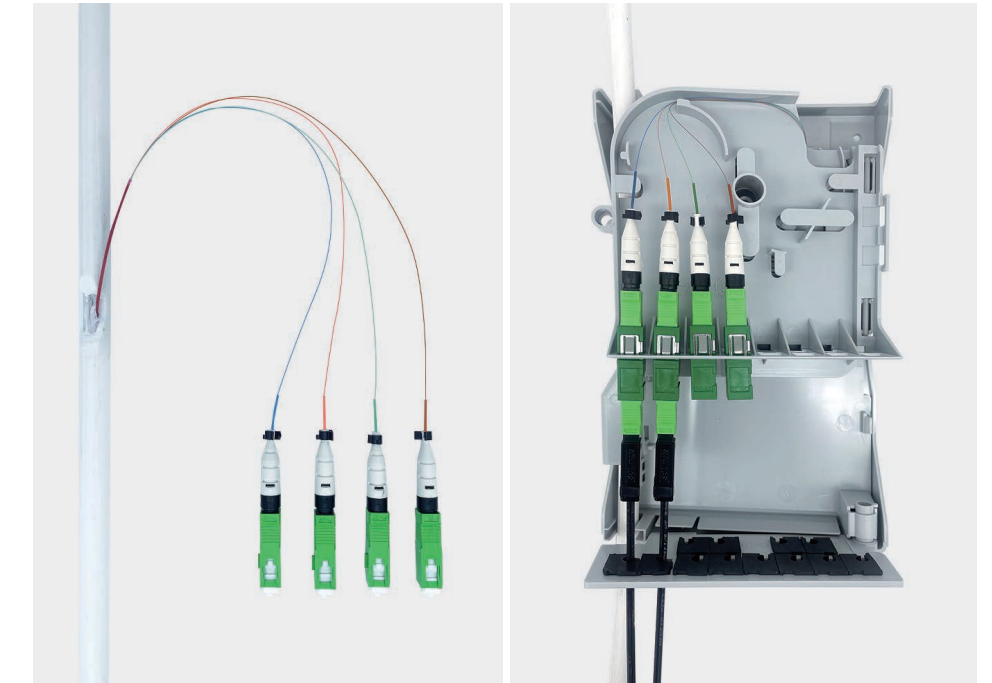


Assembly

SOLUTION 03

Direct Fiber Connect

By directly fusion splicing a connector to the optical fiber, it is possible to install and maintain a junction box more quickly and easily than the existing pigtail work method.



SOLUTION 04

Cable Connect Closure

By employing fusion splicing to join the damaged sections of a drop cable, and subsequently safeguarding it with a Solmate closure, it is now feasible to maintain the cable without the need for a complete reinstallation.

Step 1



Step 2



Step 3



Step 4





SOLMATE SOLUTION



Easy and fast

Available for everyone



Cost/space saving

Reduce cost and increase space



Solution proposal

Customized solutions for customers



On-site education

On-site education for product usage



Excellent performance

Excellent product with Industry-leading quality

SOL Mate

#1507 W-Dong, SK V1 Center, Dangsang-ro 41st 11, Seoul, Korea

Jason Kim Tel. +82-10-6644-7951 E-Mail. globalsales@soltech.co.kr, Jasonk@soltech.co.kr