




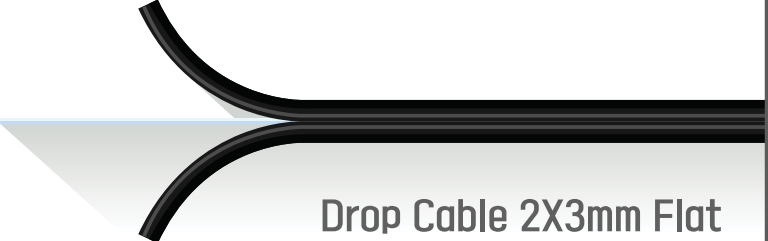







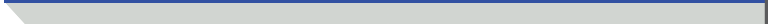
Optical Cable Quick Connector

We Got connected



SOL *Mate*

©. SOLTECH All Rights Reserved

 <p>SOL-100 Serie</p>	 <p>Drop Cable 3mm Round</p>
 <p>SOL-110 Serie</p>	 <p>Drop Cable 2X3mm Flat</p>
 <p>SOL-130 Serie</p>	 <p>Patch Cord 2mm</p>
 <p>SOL-130 Serie</p>	 <p>Patch Cord 900um Round</p>
 <p>SOL-140 Serie</p>	 <p>Patch Cord 2mm</p>
 <p>SOL-140 Serie</p>	 <p>Patch Cord 900um Round</p>



1 Start



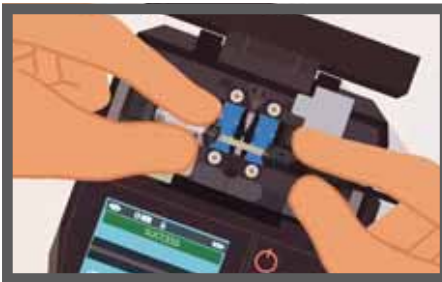
2 5~10 Sec



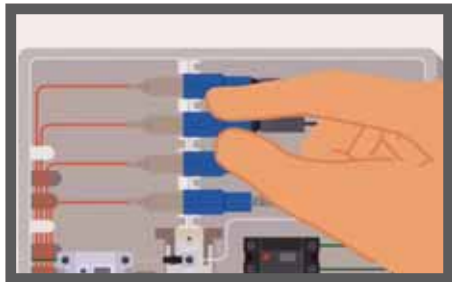
3 1~2 Sec



4 1 Sec



5 3~5 Sec

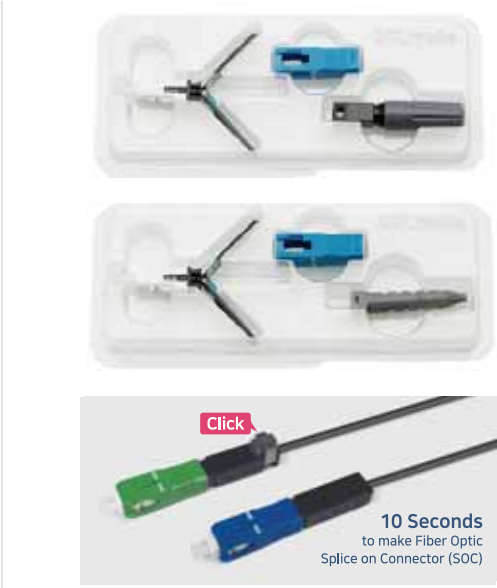
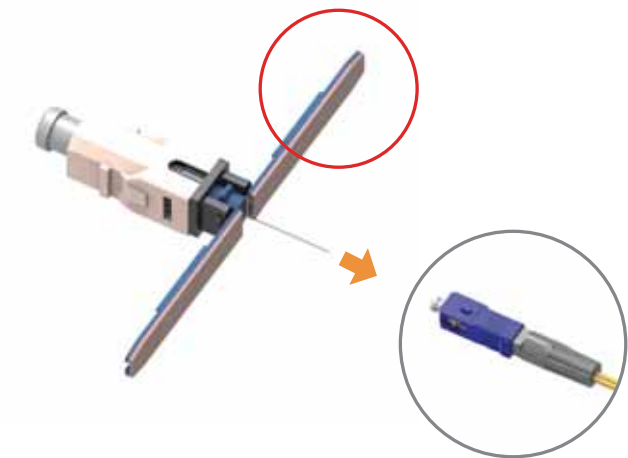


6 Finish Total Minimum 10 Sec

Field Fusion-Splicing Connector

: New generation splice on connector without heating sleeve

- **Wing Type Sticker sleeves** to protect connection Point (Semi-Permanent Life time)

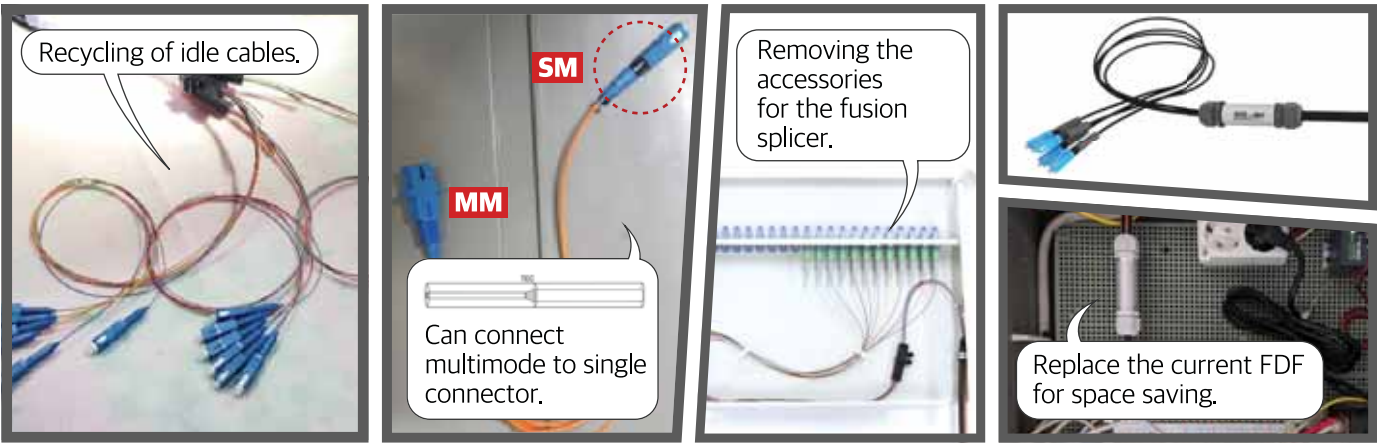


Key Features

- Field Fusion-Splicing Connector SC, LC
- FTTH Field-Fusion Type
- Faster and Stable assembly
- No sleeve Heating Process required
- Simple protection using Wing type sleeves
- Lower Insertion Loss and Return Loss

Connector Type	SC/LC APC & UPC	
Jacket Type	900um, 2mm, 3mm round, 2X3mm flat, 4mm	
Insertion Loss	Single-Mode	< 0.2 dB (included Splicing loss)
	Multi-Mode	< 0.2 dB (included Splicing loss)
Return Loss	Single-Mode	> 60 dB (APC) > 55 dB (UPC)
	Multi-Mode	> 30 dB (UPC)
Operating Temperature	-40 ° C to 75 ° C	

Application

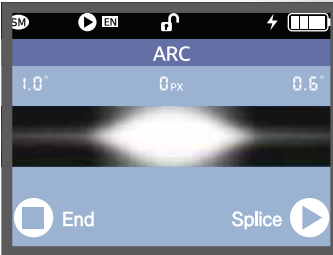


Connector Maker

: SOL-1000



▶ Micro 5 pin port Charging
(Power Bank Available)



▶ Simple splicing



▶ Available to check fiber



▶ Fast and simple protection

Specification		
Number of Fiber	Single Core	
Applicable Fibers	Single-Mode similar/dissimilar (G.652 & G.657) Multi-Mode similar/dissimilar (G.651) Dissimilar Fiber (SM/MM)	
Compatible fiber/cable	900um, 2mm, 3mm round, 2X3mm flat, 4mm	
Cleaved Length	9 ~ 10 mm	
Typical Average Splice Loss	0.1 dB or less	
Splicing Time	10 sec	
Viewing Method	1 axis CMOS camera	
Protection Method of Fusion-Spliced Point	Wing-adhesive protection	
Number of splice	200 times	
Dimension / Weight	110(W) X 115(L) X 60(H) mm	0.65 Kg
Power Supply	Installed battery by Micro 5 pin USB port (Phone charger)	
Electrode Life	3,000 splices	